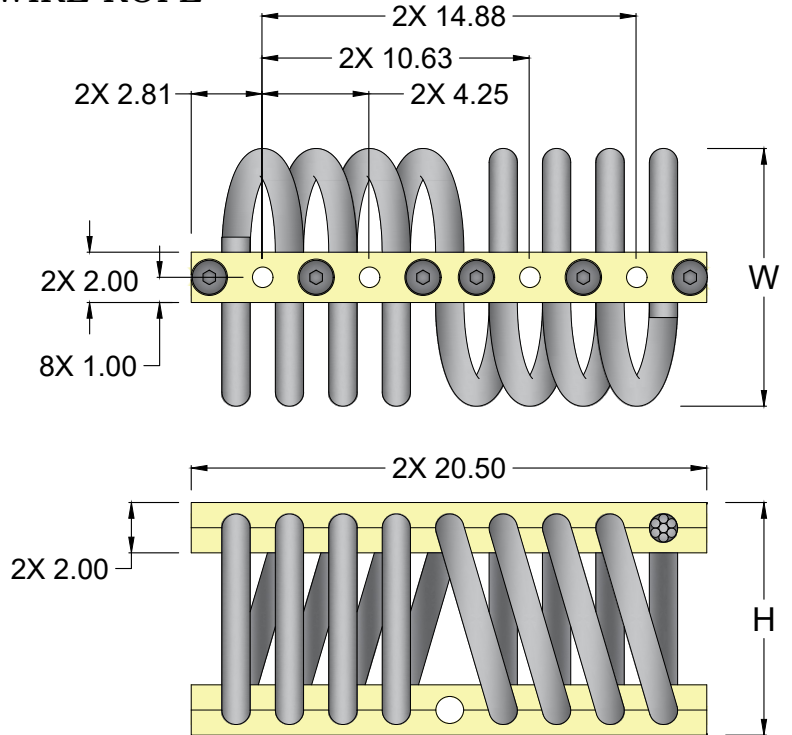
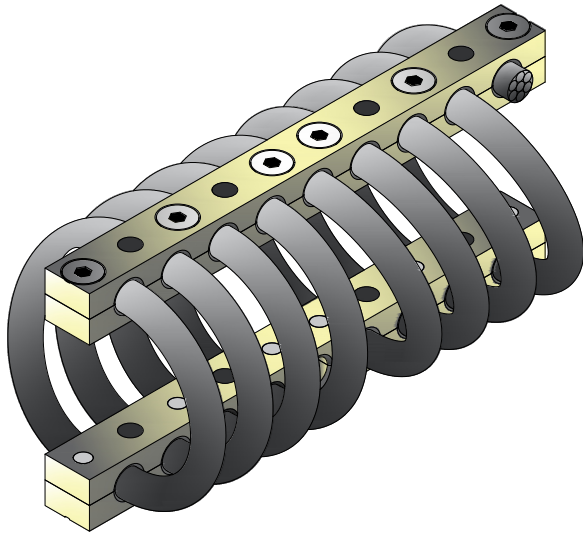


REV.	DESCRIPTION	DATE	BY

CB1900 SERIES

1 1/8 " WIRE ROPE



NOTES

1. ALL DIMENSIONS ARE IN INCHES. INTERPRET PER ANSI Y14
2. ALL DIMENSIONS ARE NOMINAL AND FOR REFERENCE ONLY

ISOLATOR PART NO.	NOMINAL H (in)	NOMINAL W (in)	LOAD MODE	SHOCK AVERAGE K (lb/in)	VIBRATION AVERAGE K (lb/in)	MAX. RATED DYNAMIC TRAVEL (lb/in)
CB1900-10-[]	7.00	8.00	COMPRESSION	5565	10500	2.00
			SHEAR/ROLL	2620	2375	2.00
			45 DEG. C/R	3545	7250	3.20
CB1900-12-[]	8.50	9.50	COMPRESSION	3180	7250	3.20
			SHEAR/ROLL	1650	1785	3.20
			45 DEG. C/R	1840	4625	4.00
CB1900-15-[]	9.25	10.25	COMPRESSION	2190	5000	4.00
			SHEAR/ROLL	1125	1375	4.00
			45 DEG. C/R	1130	3375	6.40
CB1900-17-[]	10.00	11.00	COMPRESSION	1650	3800	5.30
			SHEAR/ROLL	825	1000	5.30
			45 DEG. C/R	900	2600	6.80
CB1900-20-[]	10.75	11.75	COMPRESSION	1250	3000	6.00
			SHEAR/ROLL	625	800	6.00
			45 DEG. C/R	680	2200	7.40
CB1900-30-[]	11.50	12.50	COMPRESSION	950	2400	6.80
			SHEAR/ROLL	475	650	6.80
			45 DEG. C/R	525	1800	8.20



JOB NAME: _____

CUSTOMER : _____

CUSTOMER P.O.: _____

SALES ORDER: _____

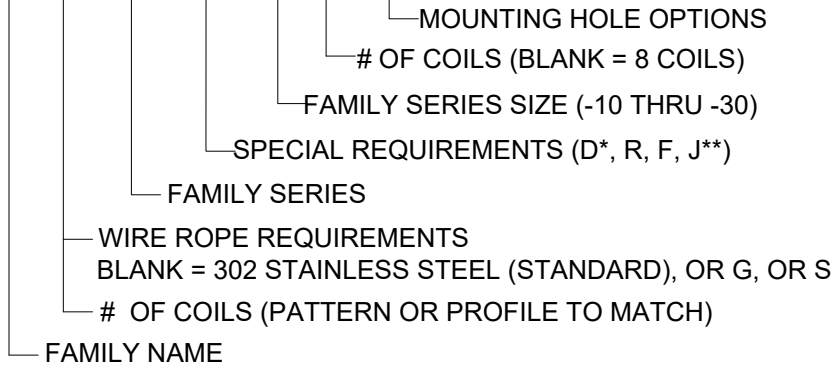
**MODEL CB1900 SERIES
WIRE ROPE ISOLATOR**



DRAWING NO.:	REVISION:	SHEET:	SCALE :
		1 OF 2	NONE

REV.	DESCRIPTION	DATE	BY

CB [] 1900 [] - 30 [] - T2



SPECIAL REQUIREMENTS

D	DFARS*
F	THREAD FREE CABLE
G	GALVANIZED CABLE
J	ALT STYLE CONSTRUCTION**
M	METRIC INSERTS
R	RoHS
S	STAINLESS STEEL TOTAL

* DFARS COMPLIANT RAW MATERIAL COMES FROM A LIMITED GROUP OF APPROVED SUPPLIERS AND IS NOT REQUIRED ON STANDARD PARTS.

** SUBJECT TO MANUFACTURER'S DISCRETION. CONTACT VMC FOR APPLICABILITY.

FEATURES & BENEFITS:	MOUNTING HOLE OPTIONS:
<ul style="list-style-type: none"> - WIDE RANGE OF AVAILABLE SIZES PERMITS ATTACHMENT TO ALMOST ANY MACHINERY OR ENCLOSURE REGARDLESS OF WEIGHT. - COMPACT, LOW-PROFILE DESIGN AND THE ABILITY TO ATTENUATE HEAVY SHOCK LOADS WITH MINIMUM DEFLECTION ALLOWS USE WHERE SPACE IS AT A PREMIUM. - THREE-PLANE, ALL-AXIS ISOLATION MEANS THAT EQUIPMENT IS FREE TO MOVE IN ANY DIRECTION - VERTICALLY, HORIZONTALLY, AND Laterally. - CUSTOM WINDING, LOOP COUNT AND MOUNTING FEATURES ARE AVAILABLE TO MEET SPECIFIC REQUIREMENTS. - OPERATING TEMPERATURE RANGE -400F TO +700F. 	<p>M = METRIC M C'SK = Ø.817 X 90° M THREAD = M20 X 2.5</p> <div style="display: flex; justify-content: space-around;"> <div style="text-align: center;"> <p>4X Ø.817 THRU HOLE</p> <p>THRU -C OR -CM C'SK</p> <p>4X Ø.817 X C'SK 82°</p> </div> <div style="text-align: center;"> <p>4X Ø.817 X C'SK 82°</p> <p>C'SK -C2 OR -CM2 C'SK</p> <p>4X Ø.817 X C'SK 82°</p> </div> </div> <div style="display: flex; justify-content: space-around;"> <div style="text-align: center;"> <p>4X Ø.817 THRU HOLE</p> <p>THRU -T OR -TM THREAD</p> <p>4X THREAD 3/4 - 10</p> </div> <div style="text-align: center;"> <p>4X THREAD 3/4 - 10</p> <p>THREAD -CT OR -CTM C'SK</p> <p>4X Ø.817 X C'SK 82°</p> </div> </div> <div style="display: flex; justify-content: space-around;"> <div style="text-align: center;"> <p>4X THREAD 3/4 - 10</p> <p>THREAD -T2 OR -TM2 THREAD</p> <p>4X THREAD 3/4 - 10</p> </div> <div style="text-align: center;"> <p>4X Ø.817 THRU HOLE</p> <p>THRU -[] OR -M THRU</p> <p>4X Ø.817 THRU HOLE</p> </div> </div>
STANDARD MATERIALS / FINISHES:	
<ul style="list-style-type: none"> - WIRE ROPE MATERIALS: SERIES 302 STAINLESS STEEL. - BAR MATERIALS: ALUMINUM ALLOY 6061-T6, -T6510, OR -T6511 PER SAE AMS4113, SAE AMS4150, OR ASTM B221 WITH CHEMICAL CONVERSION COATING PER MIL-DTL-5541, CLASS 1A. 	
SPECIAL OPTIONS:	
<ul style="list-style-type: none"> - WIRE ROPE MATERIALS: GALVANIZED, IMPROVED PLOW WIRE, PLASTIC FILLED VALLEY WIRE, INCONEL 600, STAINLESS STEEL TYPE 316, STAINLESS STEEL TYPE 305. - BAR MATERIALS: STAINLESS STEEL, CRES TYPE 302, 303, 304, OR 304L WITH FINISH PASSIVATED PER QQ-P-35C TYPE II. - MOUNTING CONFIGURATIONS: INSERTS, THREAD TYPES, CLEARANCE HOLES. - CONTACT VMC FOR OTHER MATERIAL AVAILABILITIES. 	



JOB NAME: _____

CUSTOMER : _____

CUSTOMER P.O.: _____

SALES ORDER: _____

MODEL CB1900 SERIES
WIRE ROPE ISOLATOR



Bloomington, NJ Houston, TX Corona, CA Wind Gap, PA

DRAWING NO.:	REVISION:	SHEET:	SCALE :
		2 OF 2	NONE